

L400

3D SNAPSHOT SCANNER

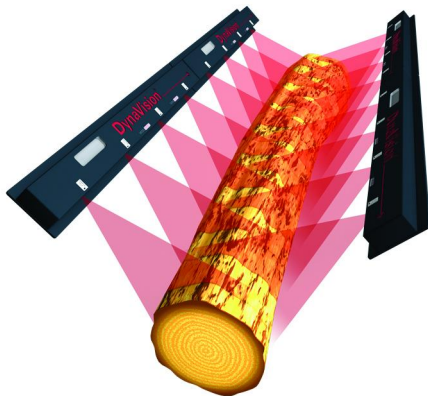
An ideal product for carriage scanning in the primary breakdown process.

FOUR LASERS IN EACH SCAN HEAD

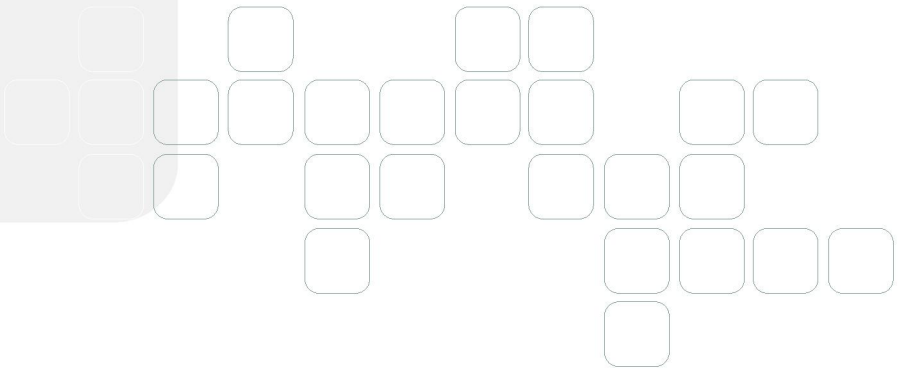
LARGE STAND OFF AND RANGE

ETHERNET INTERFACE

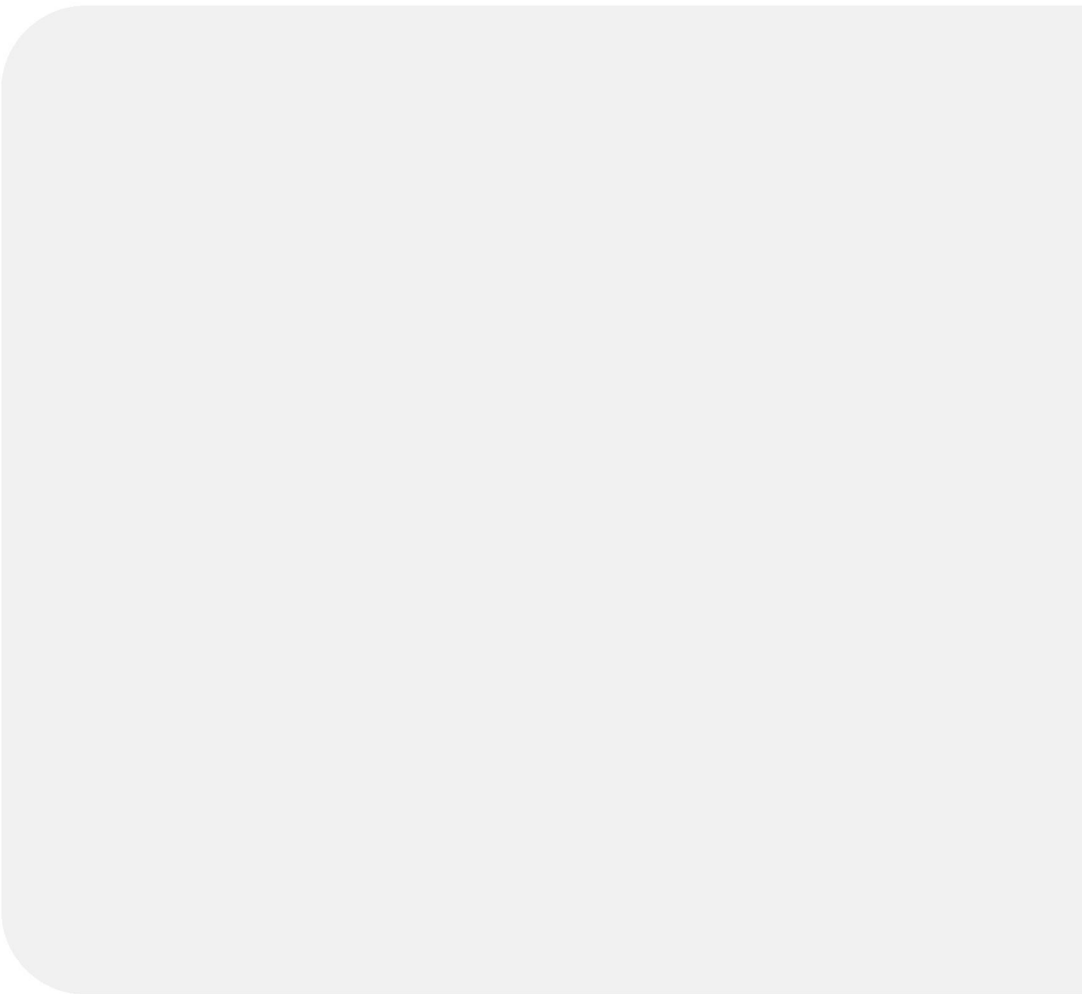
The DynaVision® L400 3D snapshot scanner produces accurate profiles to ensure the best positioning and cutting decisions. This sensor uses four lasers in each head, and provides high frame rates to collect instantaneous profiles, or if required, it can continuously collect profiles along the log.



- Designed with four laser lines to capture a complete 3D profile of your log with as little as 1' of travel.
- Built with a large stand off and range to collect accurate profiles from a distance.
- The LX Station now allows the DynaVision L4A system the ability to communicate via Ethernet with your host PC.



DynaVision®



www.LMItechnologies.com



DynaVision Sensors That See™ is a market leader in fast, accurate, and reliable scanning technology for the wood processing industry. Today we have over 10,000 sensors operating in the field. As a member of the LMI Technologies Inc. team, we provide responsive scanning technology for better optimization solutions.

©2006 LMI Technologies. All rights reserved. DynaVision is a registered trademark and FireSync and Chroma+scan are trademarks of LMI Technologies Inc. Information contained in this brochure is subject to change without notice.

<Wood_DataSheet_L400_v0.pdf>

DynaVision  **SENSORS THAT SEE.**

North & South America: 1-604-636-1011
Europe & Asia: +46 31 336 25 10