

EyeCon-2x00

TIRE GEOMETRY MEASUREMENT SENSORS

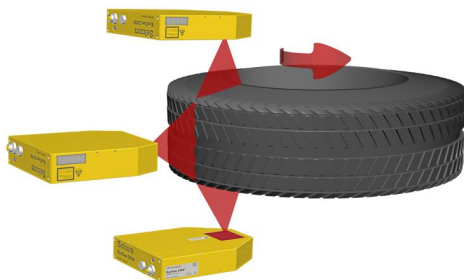
The dual camera EyeCon 2x00 laser line sensors deliver synchronized, tire map data sets suited for sidewall, run-out, balancing, and DOT code reading applications.

The new Selcom EyeCon™ product line represents over 25 years of service to the tire industry. This complete OEM system solution offers improved uniformity, simple integration, fast profile rate, and high resolution to ensure best possible data quality for all tire geometry related testing.

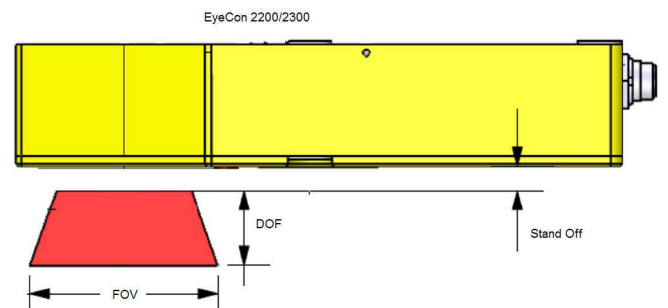
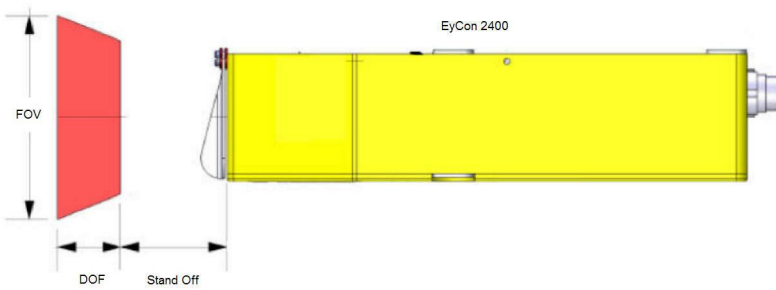
FAST INTEGRATION - SIMPLE SET UP
SCALABLE SYSTEM DESIGN
NETWORKED SOLUTION, COMPACT SIZE



Encoder synchronized tire mapping



- **FAST AND SIMPLE INTEGRATION:** Sample set up and visualization application included. Sample communication C-code for control and data handling. You are up and running in 30 minutes!
- **SCALABLE PLATFORM:** Built on LMI's FireSync™ platform; a proven set of software, hardware, and integration tools that improve performance, ensure data integrity, and simplify integration.
- **NETWORKED SOLUTION:** Integrate the EyeCon system to your application using industry standard TCP/IP communication.
- **DIRECT ENCODER INPUT:** The EyeCon system automatically synchronizes all sensor data to a single encoder source.



www.SensorsThatSee.com



LMI Technologies Inc. designs and manufactures vision sensors marketed by LMI and its divisions Selcom and DynaVision under the Sensors That See™ brand. Since 1980, tens of thousands of Sensors That See products have been employed worldwide in diverse commercial and industrial automated applications.

©2006 LMI Technologies, Inc. All rights reserved. Selcom™, EyeCon™ and EyeCon-2x00™ are registered trademarks of LMI Technologies, Inc. Information in this brochure is subject to change without notice.

<RubberandTire_DataSheet_EyeCon-2x00_v0.pdf>